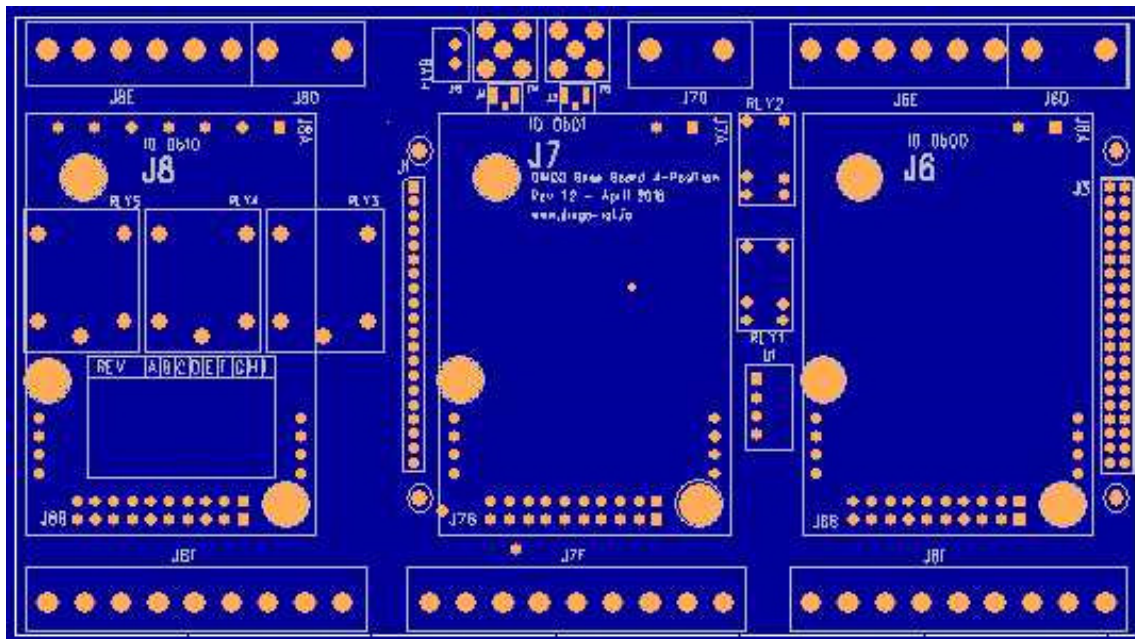


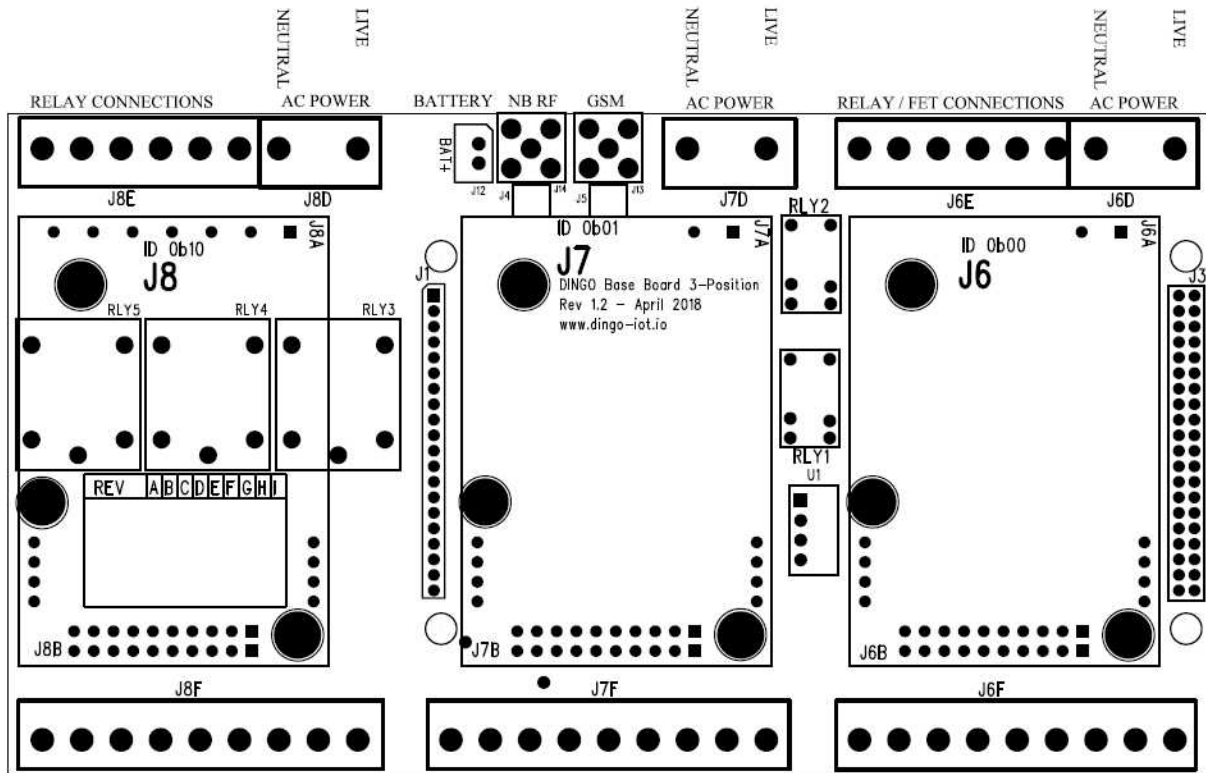
**DINGO Three Station Base Board**

**Item specifications**

Go-IoT Item Id:	Option	DINGO-BB-3ST-01
Plug-in Positions		3
USB 2.0 Ports		3
Serial TTL Interface		2
I2C Ports		1
SPI Ports		1
Opto Isolated Inputs	A	4 Dry Inputs – 4 Wet Inputs
Relays	B	2 x 240VAC 1A
Opto Isolated FET Outputs	C	4 x N Channel 42V DC 14A
Relays	D	3 x 240VAC 10A – (Populated on Station 3)
Battery Backup	E	1 x Intelligent UPS and DC Supply Monitoring
Expansion Connectors		1 x 40way header from Computer Board 1 x 20way header from Computer Board 21 x GPIO
DC Input	F	+12V DC
DC Input	G	+15V DC - +42V DC
AC Input		
Screw Terminals	J	
Push On Terminals	K	
Temperature		-20degree C to +85degree C
Size (L x W x H)		156 x 85 x 40 mm
Country/Region of Manufacture:		EU



## HIGH VOLTAGE CONNECTIONS



----- MODULE CONNECTIONS -----

DC POWER  
+VE  
-VE

-- MODULE --  
CONNECTIONS

INPUT 2  
INPUT 1  
ISOLATED GROUND

----- OPTO CONNECTIONS -----

ISOLATED GROUND  
INPUT 3  
INPUT 4  
ISOLATED GROUND  
INPUT 5  
INPUT 6  
ISOLATED GROUND  
INPUT 7  
INPUT 8

## LOW VOLTAGE CONNECTIONS