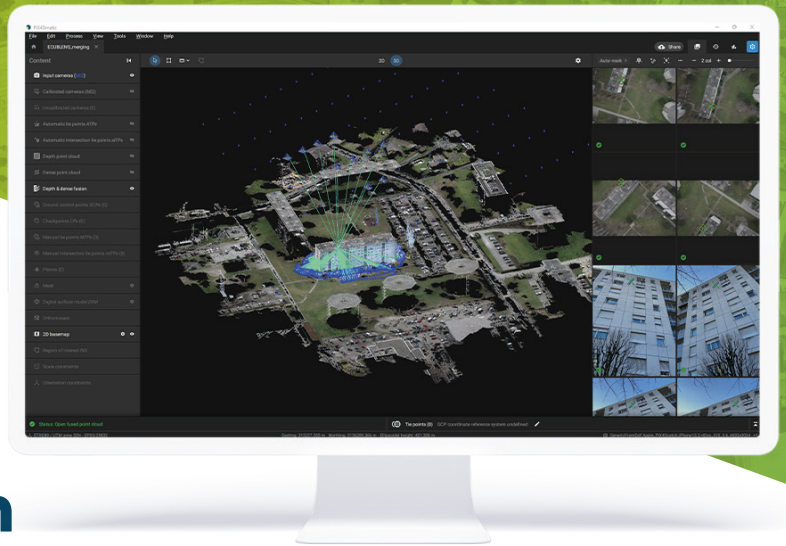




PIX4Dmatic



# Next generation photogrammetry software for professional terrestrial and drone surveying

The optimized software for the next  
surveying and mapping challenges



## Easy to learn

PIX4Dmatic is easy to learn and to start working in production on. A powerful professional software can be simple to use, yet have advanced capabilities.



## You are in control

Developed in close-collaboration with surveyors and mapping professionals to streamline your workflow: import, process and assess the quality of a project in just a few clicks.



## Terrestrial workflow

Choose between depth or dense point clouds, or fuse the two. Get an accurate 3D model with LiDAR and photogrammetry using the PIX4Dcatch mobile app and an RTK-enabled device.



# Highlights

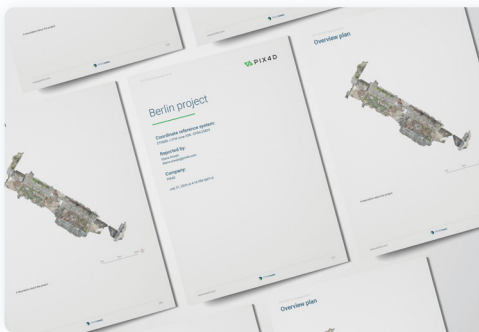
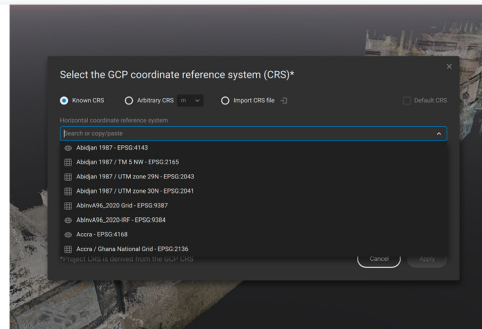


## Project merging

Complement aerial drone mapping data with terrestrial PIX4Dcatch RTK datasets: calibrate multiple projects separately with optimal processing settings and merge them.

## Advanced coordinate reference systems support

Supports a wide range of horizontal and vertical coordinate reference systems and geoid models.



## Documentation

Document your work with custom reports with your logo.

# Essential outputs, without compromising accuracy



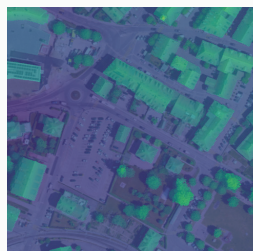
### Point cloud

.laz, .las 1.4, .las 1.2,  
.XYZ



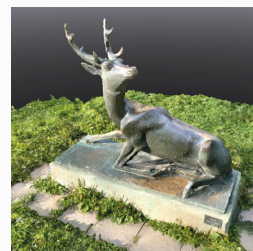
### Orthomosaic

.tiff (GeoTIFF), .jpg with  
.jgw, .prj, .tfw



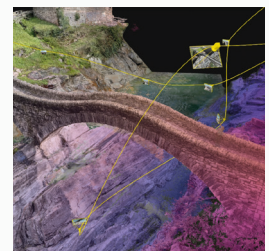
### Digital surface model (DSM)

.tiff (GeoTIFF), .prj, .tfw



### Mesh

.obj, .slpk, .b3dm (tiles)



### Reports

Quality report (.pdf),  
Custom reports (.pdf)



Try for free at  
**[pix4d.com/matic](https://pix4d.com/matic)**



Available for Windows & macOS